



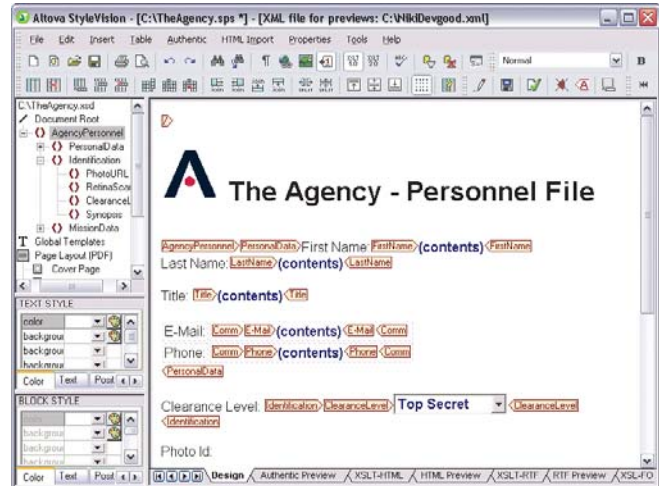
The ultimate e-forms, DB report and stylesheet designer.

Altova® StyleVision® 2005 is the ultimate electronic forms, database report, and stylesheet designer for transforming XML and database content into HTML, PDF, and Word/RTF output. StyleVision 2005 supports XSLT 1.0/2.0, XSL:FO, and all major databases. In one simple step you can access XML or database data, process it, and render it into intuitive Authentic® electronic forms or eye-catching HTML pages, PDF reports, or Word/RTF documents.

## Create Eye-Catching Output

Altova StyleVision 2005 features a unique visual design interface for creating stylesheets to transform XML and database data into multiple output formats. Because StyleVision 2005 produces XSLT 1.0/2.0 and XSL:FO stylesheets, plus HTML, PDF, RTF/Microsoft® Word® and Authentic Form output simultaneously, you no longer need to spend countless hours hand-coding and testing numerous intricate stylesheets to transform the same content into multiple formats. StyleVision 2005 supports:

- >> Visual stylesheet design
- >> Auto-generation of standards-conformant stylesheets
- >> Generation of multiple stylesheets from one design
- >> Database reporting
- >> Electronic Authentic Form design
- >> Previewing and saving stylesheets
- >> Previewing and saving HTML, PDF, and Word/RTF output
- >> Batch execution from the command line
- >> HTML-to-XML conversion
- >> Advanced standards compliance:
  - > XSLT 1.0
  - > XSLT 2.0
  - > XPath 1.0
  - > XPath 2.0
  - > XSL:FO
  - > Industry templates (DocBook, NewsML, etc.)



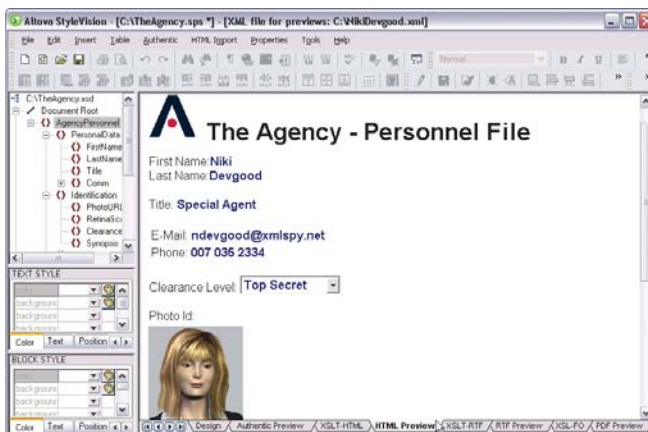
StyleVision graphical user interface and main design window

## Visual Stylesheet Design

With StyleVision 2005, you design a StyleVision Power Stylesheet (SPS) visually, using drag-and-drop and intelligent design functions. Your SPS can be based on a DTD, XML Schema, or database. StyleVision 2005 simultaneously produces the following based from your single design:

- >> XSLT 1.0 or 2.0 stylesheet (for HTML)
- >> XSLT 1.0 or 2.0 stylesheet (for Word/RTF)
- >> XSL:FO stylesheet (for PDF)
- >> HTML preview
- >> Word/RTF preview
- >> PDF preview
- >> Authentic Form

As you design, you can view any of these stylesheets and output files by simply clicking on the appropriate tab at the bottom of the design window.



Output preview in multiple formats

## Database Reports

Because StyleVision 2005 allows you to base your SPS on a database (in addition to a DTD or XML Schema), you can design database reports with eye-catching output to HTML, PDF, and Word/RTF quickly and easily.

### Supported databases:

- >> Microsoft® Access®
- >> Microsoft® SQL Server
- >> MySQL®
- >> Oracle®
- >> IBM DB2®
- >> Any ADO database



## XSLT and XSL:FO Stylesheets

StyleVision 2005 supports XSLT 1.0 and XSL:FO, and it also includes the industry's first production-grade implementation of the powerful XSLT 2.0 and XPath 2.0 specifications. As you design your SPS, you can choose between XSLT 1.0 and XSLT 2.0 stylesheets for producing output to HTML and Word/RTF, and StyleVision 2005 automatically creates XPath 1.0 or 2.0 selectors to build your stylesheet, thereby negating the occurrence of errors. Your design also automatically creates the corresponding XSL:FO stylesheet for PDF output.

In addition to defining formatting and layout characteristics, StyleVision 2005 allows you to design stylesheets that support advanced functions such as auto-calculation based on XPath 1.0/2.0 expressions, complex table handling, rich input formatting, date control, and more.

StyleVision 2005 auto-generates standards-compliant, error-free stylesheets, which saves a significant amount of time when compared to hand coding XSLT.

```

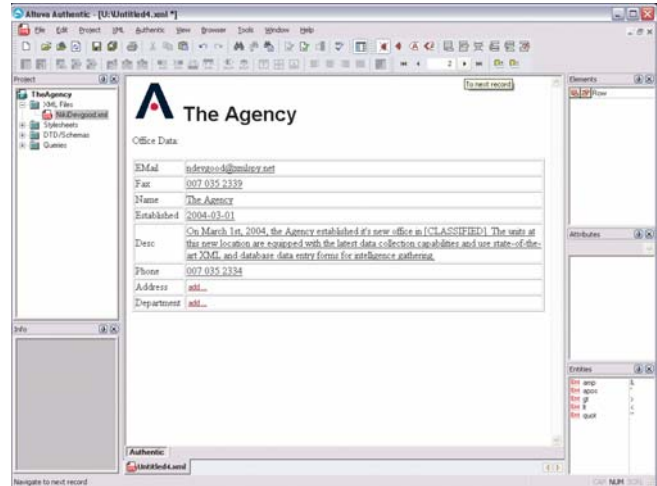
1 <?xml version="1.0" encoding="UTF-8"?>
2 <xsl:stylesheet version="2.0" xmlns:xsl="http://www.w3.org/1999/XSL/Transform" xmlns:xs="http://www.w3.org/2001/XMLSchema" xmlns:
3 <xsl:output version="1.0" encoding="UTF-8" xml:declaration="no" indent="no" media-type="text/html" />
4 <xsl:template match="/">
5 <xsl:element href="#Content-Type" content="text/html; charset=UTF-8" />
6 <xsl:element href="#Content-Type" content="text/html; charset=UTF-8" />
7 <xsl:element href="#Content-Type" content="text/html; charset=UTF-8" />
8 <xsl:element href="#Content-Type" content="text/html; charset=UTF-8" />
9 <xsl:element href="#Content-Type" content="text/html; charset=UTF-8" />
10 <xsl:element href="#Content-Type" content="text/html; charset=UTF-8" />
11 <xsl:element href="#Content-Type" content="text/html; charset=UTF-8" />
12 <xsl:element href="#Content-Type" content="text/html; charset=UTF-8" />
13 <xsl:element href="#Content-Type" content="text/html; charset=UTF-8" />
14 <xsl:element href="#Content-Type" content="text/html; charset=UTF-8" />
15 <xsl:element href="#Content-Type" content="text/html; charset=UTF-8" />
16 <xsl:element href="#Content-Type" content="text/html; charset=UTF-8" />
17 <xsl:element href="#Content-Type" content="text/html; charset=UTF-8" />
18 <xsl:element href="#Content-Type" content="text/html; charset=UTF-8" />
19 <xsl:element href="#Content-Type" content="text/html; charset=UTF-8" />
20 <xsl:element href="#Content-Type" content="text/html; charset=UTF-8" />
21 <xsl:element href="#Content-Type" content="text/html; charset=UTF-8" />
22 <xsl:element href="#Content-Type" content="text/html; charset=UTF-8" />
23 <xsl:element href="#Content-Type" content="text/html; charset=UTF-8" />
24 <xsl:element href="#Content-Type" content="text/html; charset=UTF-8" />
25 <xsl:element href="#Content-Type" content="text/html; charset=UTF-8" />
26 <xsl:element href="#Content-Type" content="text/html; charset=UTF-8" />
27 <xsl:element href="#Content-Type" content="text/html; charset=UTF-8" />
28 <xsl:element href="#Content-Type" content="text/html; charset=UTF-8" />
29 <xsl:element href="#Content-Type" content="text/html; charset=UTF-8" />
30 <xsl:element href="#Content-Type" content="text/html; charset=UTF-8" />
31 <xsl:element href="#Content-Type" content="text/html; charset=UTF-8" />
32 <xsl:element href="#Content-Type" content="text/html; charset=UTF-8" />
33 <xsl:element href="#Content-Type" content="text/html; charset=UTF-8" />
34 <xsl:element href="#Content-Type" content="text/html; charset=UTF-8" />
35 <xsl:element href="#Content-Type" content="text/html; charset=UTF-8" />
36 <xsl:element href="#Content-Type" content="text/html; charset=UTF-8" />
37 <xsl:element href="#Content-Type" content="text/html; charset=UTF-8" />
38 <xsl:element href="#Content-Type" content="text/html; charset=UTF-8" />
39 <xsl:element href="#Content-Type" content="text/html; charset=UTF-8" />
40 <xsl:element href="#Content-Type" content="text/html; charset=UTF-8" />
41 <xsl:element href="#Content-Type" content="text/html; charset=UTF-8" />
42 <xsl:element href="#Content-Type" content="text/html; charset=UTF-8" />
43 <xsl:element href="#Content-Type" content="text/html; charset=UTF-8" />
44 <xsl:element href="#Content-Type" content="text/html; charset=UTF-8" />
45 <xsl:element href="#Content-Type" content="text/html; charset=UTF-8" />
46 <xsl:element href="#Content-Type" content="text/html; charset=UTF-8" />
47 <xsl:element href="#Content-Type" content="text/html; charset=UTF-8" />
48 <xsl:element href="#Content-Type" content="text/html; charset=UTF-8" />
49 <xsl:element href="#Content-Type" content="text/html; charset=UTF-8" />
50 <xsl:element href="#Content-Type" content="text/html; charset=UTF-8" />
51 <xsl:element href="#Content-Type" content="text/html; charset=UTF-8" />
52 <xsl:element href="#Content-Type" content="text/html; charset=UTF-8" />
53 <xsl:element href="#Content-Type" content="text/html; charset=UTF-8" />
54 <xsl:element href="#Content-Type" content="text/html; charset=UTF-8" />
55 <xsl:element href="#Content-Type" content="text/html; charset=UTF-8" />
56 <xsl:element href="#Content-Type" content="text/html; charset=UTF-8" />
57 <xsl:element href="#Content-Type" content="text/html; charset=UTF-8" />
58 <xsl:element href="#Content-Type" content="text/html; charset=UTF-8" />
59 <xsl:element href="#Content-Type" content="text/html; charset=UTF-8" />
60 <xsl:element href="#Content-Type" content="text/html; charset=UTF-8" />
61 <xsl:element href="#Content-Type" content="text/html; charset=UTF-8" />
62 <xsl:element href="#Content-Type" content="text/html; charset=UTF-8" />
63 <xsl:element href="#Content-Type" content="text/html; charset=UTF-8" />
64 <xsl:element href="#Content-Type" content="text/html; charset=UTF-8" />
65 <xsl:element href="#Content-Type" content="text/html; charset=UTF-8" />
66 <xsl:element href="#Content-Type" content="text/html; charset=UTF-8" />
67 <xsl:element href="#Content-Type" content="text/html; charset=UTF-8" />
68 <xsl:element href="#Content-Type" content="text/html; charset=UTF-8" />
69 <xsl:element href="#Content-Type" content="text/html; charset=UTF-8" />
70 <xsl:element href="#Content-Type" content="text/html; charset=UTF-8" />
71 <xsl:element href="#Content-Type" content="text/html; charset=UTF-8" />
72 <xsl:element href="#Content-Type" content="text/html; charset=UTF-8" />
73 <xsl:element href="#Content-Type" content="text/html; charset=UTF-8" />
74 <xsl:element href="#Content-Type" content="text/html; charset=UTF-8" />
75 <xsl:element href="#Content-Type" content="text/html; charset=UTF-8" />
76 <xsl:element href="#Content-Type" content="text/html; charset=UTF-8" />
77 <xsl:element href="#Content-Type" content="text/html; charset=UTF-8" />
78 <xsl:element href="#Content-Type" content="text/html; charset=UTF-8" />
79 <xsl:element href="#Content-Type" content="text/html; charset=UTF-8" />
80 <xsl:element href="#Content-Type" content="text/html; charset=UTF-8" />
81 <xsl:element href="#Content-Type" content="text/html; charset=UTF-8" />
82 <xsl:element href="#Content-Type" content="text/html; charset=UTF-8" />
83 <xsl:element href="#Content-Type" content="text/html; charset=UTF-8" />
84 <xsl:element href="#Content-Type" content="text/html; charset=UTF-8" />
85 <xsl:element href="#Content-Type" content="text/html; charset=UTF-8" />
86 <xsl:element href="#Content-Type" content="text/html; charset=UTF-8" />
87 <xsl:element href="#Content-Type" content="text/html; charset=UTF-8" />
88 <xsl:element href="#Content-Type" content="text/html; charset=UTF-8" />
89 <xsl:element href="#Content-Type" content="text/html; charset=UTF-8" />
90 <xsl:element href="#Content-Type" content="text/html; charset=UTF-8" />
91 <xsl:element href="#Content-Type" content="text/html; charset=UTF-8" />
92 <xsl:element href="#Content-Type" content="text/html; charset=UTF-8" />
93 <xsl:element href="#Content-Type" content="text/html; charset=UTF-8" />
94 <xsl:element href="#Content-Type" content="text/html; charset=UTF-8" />
95 <xsl:element href="#Content-Type" content="text/html; charset=UTF-8" />
96 <xsl:element href="#Content-Type" content="text/html; charset=UTF-8" />
97 <xsl:element href="#Content-Type" content="text/html; charset=UTF-8" />
98 <xsl:element href="#Content-Type" content="text/html; charset=UTF-8" />
99 <xsl:element href="#Content-Type" content="text/html; charset=UTF-8" />
100 <xsl:element href="#Content-Type" content="text/html; charset=UTF-8" />

```

Auto-generated, standards-compliant stylesheets

## Authentic Forms

Every SPS you design automatically produces an electronic Authentic Form for use with Altova Authentic 2005, which is available free-of-charge on the Altova Web site. Authentic 2005 provides users with an easy-to-use interface for entering content into XML documents or databases without having to understand XML or database technologies or install any other XML or database applications on client machines. It is ideal as the business user's data entry interface to advanced XML-based document frameworks and management-oriented databases.



Authentic Form for user-friendly relational database content editing

## HTML-to-XML Conversion

In the past, conversion from HTML to XML was a complex, time consuming process. StyleVision 2005 allows you to convert via the same visual drag and drop process used to design an SPS, allowing you to easily convert an HTML page to an XML file, XML Schema, and XSLT stylesheet.

## Ordering Information

StyleVision 2005 is available in Enterprise and Professional Editions. It is supported on Windows NT, 2000, and XP.

You may download a free 30-day trial of StyleVision 2005 at [www.altova.com/download](http://www.altova.com/download). To purchase a permanent license please visit the Altova Online Shop at [shop.altova.com](http://shop.altova.com).



Altova® XML Suite

StyleVision 2005 is also available as part of the specially priced Altova XML Suite 2005 – the most complete XML development toolset on the market. The Altova XML Suite 2005 includes Altova XMLSpy® 2005, Altova MapForce® 2005, Altova StyleVision® 2005, and Altova SchemaAgent™ 2005 and is offered at bargain prices in Enterprise and Professional Editions.

## About Altova

Altova accelerates development and integration projects with software, services, and solutions that enhance productivity and maximize results. As an innovative, customer-focused company and the creator of XMLSpy, MapForce, and other leading software development and data integration tools, Altova is the choice of over 1.5 million clients worldwide and virtually every Fortune 500 company. With customers ranging from vast development teams in the world's largest organizations to progressive one-person shops, Altova's line of software applications and custom-tailored professional and educational services fulfills a broad spectrum of business needs. Altova is an active member of the World Wide Web Consortium (W3C) and is committed to delivering standards-based platform-independent solutions that are powerful, affordable, and easy to use. Altova was founded in 1992 and has headquarters in Beverly, Massachusetts and Vienna, Austria. Visit Altova on the Web at [www.altova.com](http://www.altova.com).